

HTP

METALLIC ROTARY VANE MAG DRIVE PUMPS
DRY SELF-PRIMING

POMPE ROTATIVE A PALETTE
A TRASCINAMENTO MAGNETICO
IN METALLO, AUTOADESCANTI A SECCO



■ MAIN FEATURES

Rotary vane mag drive pumps series HTP are made of AISI 316 or, if requested on other metallic materials (Titanium and Hastelloy) and are suitable for hydrocarbons, solvents, heat transfer oils, refrigerants, cryogenics and radioactive liquids. Thanks to the innovative mag drive system, pumps model HTP reduce the risks of leakage and emissions and the maintenance costs. HTP pumps are useful for low flow and high head applications such as Pilot Plants, Sampling and Flushing of mechanical seals. Especially designed for thin non-lubricating liquids and/or high differential pressure.

Pumps series HTP are also available in ATEX version for zone 1 and 2 (pump model EM-P).

- Materials available: AISI 316;
- Materials in contact with the liquid: pump body, end cover and rotor: AISI 316; O-ring: EPDM/VITON; Carbon Graphite Stator;
- Max flow: 2100 l/h; Max pressure 13 bar;
- Temperature range: from -70°C to +250°C;
- Max viscosity: 2000 cPs;
- System Pressure 25 bar.

■ STANDARD:

- High torque magnetic coupling;
- Direct starting motor

■ OPTIONAL:

- Flanges available;
- Dry-running protection;
- Baseplate;
- ATEX version (pump mod. EM-P);
- Explosion proof motor.

■ CARATTERISTICHE

Le pompe rotative a palette serie HTP sono costruite in AISI 316 o, su richiesta in altri materiali metallici (Titanio e Hastelloy) e sono adatte al pompaggio di idrocarburi, solventi, olio diatermico, refrigeranti, criogenici e liquidi radioattivi. Grazie all'innovativo sistema a trascinamento magnetico, le pompe modello HTP riducono il rischio di perdite ed emissioni.

Le pompe HTP sono adatte per applicazioni con basse portate e alte pressioni come ad esempio Impianti Pilota, Campionamento e Flussaggio delle tenute meccaniche. Si tratta di pompe progettate per l'utilizzo con liquidi volatili e non lubrificati e/o ad alta pressione differenziale.

Le pompe della serie HTP possono essere fornite anche in versione ATEX per zona 1 e 2 (pompa modello EM-P).

- Materiali disponibili: AISI 316;
- Materiali a contatto con il liquido: corpo, coperchio e rotore: AISI 316; O-ring EPDM/VITON; Statore in grafite;
- Portata fino a 2100 l/h; Pressione fino a 13 bar;
- Temperatura max di esercizio: da -70°C a +250°C;
- Viscosità massima: 2000 cPs;
- Pressione di sistema 25 bar.

■ STANDARD:

- Elevata coppia magnetica;
- Avviamento diretto.

■ OPTIONAL:

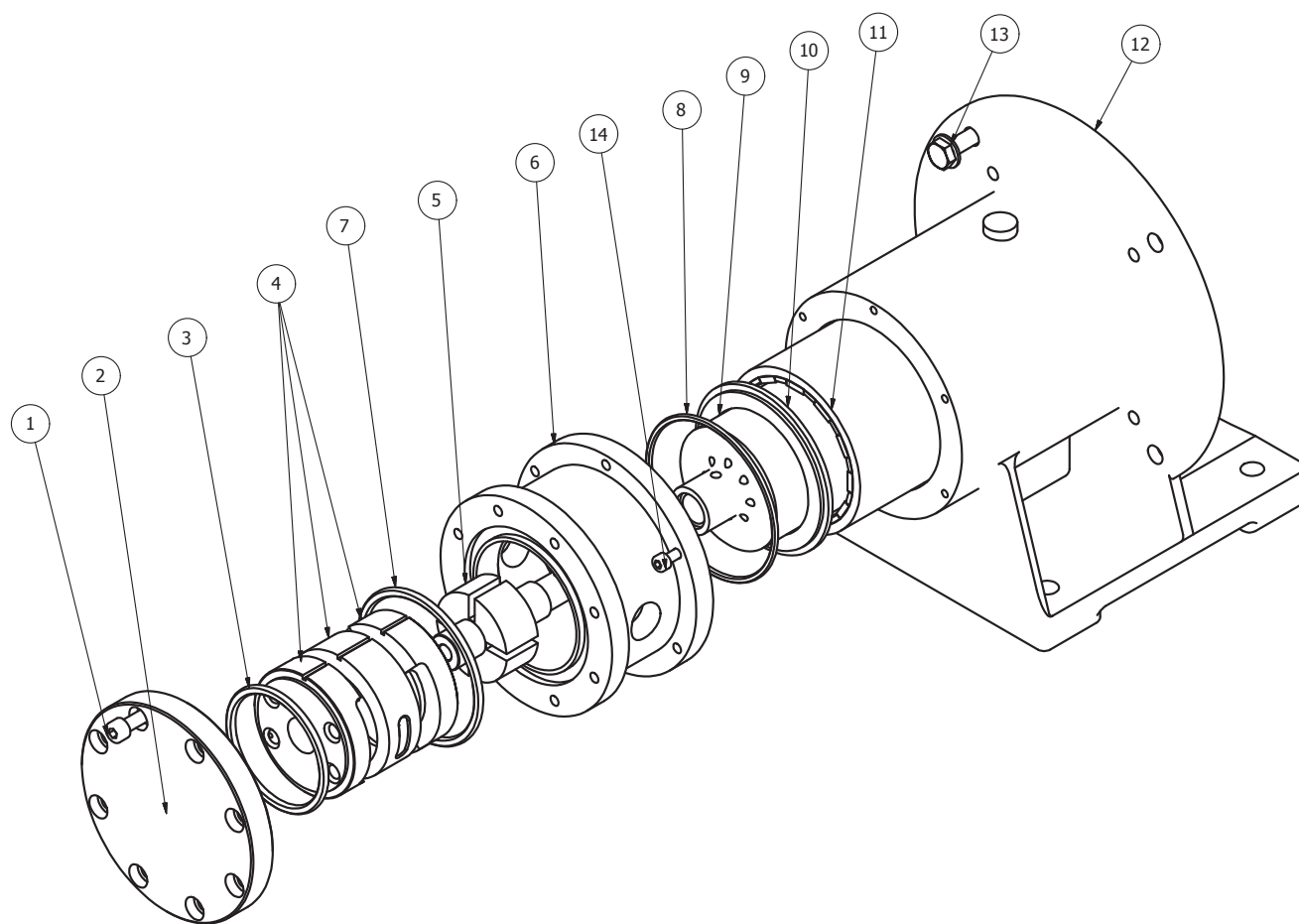
- Flange;
- Dispositivo contro la marcia a secco;
- Basamento;
- Versione ATEX (pompe mod. EM-P);
- Motore antideflagrante.

HTP

EXPLODED VIEW AND PARTS LIST

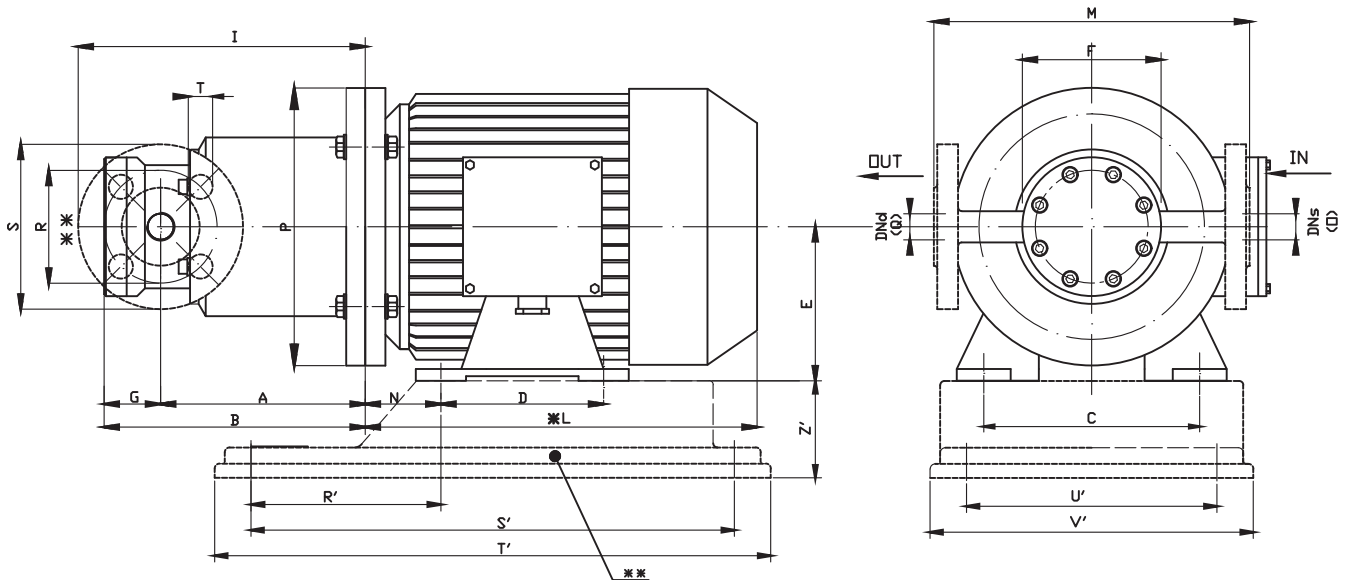
ESPLOSO E LISTA PARTI

HTP 1°-2°-3° RANGE EM-P 1°-2°-3° RANGE (ATEX VERSION)



POS.	1	2	3	4	5	6	7	8	9	10	11	12	13	14
PART. DESCR.	SET SCREWS	END COVER	O - RING	FLANGE STATOR VANES + PINS	ROTOR SHAFT	PUMP BODY	O - RING	O - RING	INTERNAL MAGNET	REAR CASING	EXTERNAL MAGNET	BRACKET	SET SCREWS	SET SCREWS
DESCR. PARTI	SET VITI	COPERCHIO	O - RING	FLANGE STATORE PALETTE + SPINE	ROTORE	CORPO POMPA	O - RING	O - RING	MAGNETE INTERNO	BICCHIERE	MAGNETE ESTERNO	LANTERNA	SET VITI	SET VITI
MATERIALS MATERIALI	AISI 304	AISI 316	EPDM VITON	GRAPHITE	AISI 316	AISI 316	EPDM VITON	EPDM VITON	AISI 316	AISI 316	C40 + NdFeb	ALUMINIUM	AISI 304	AISI 304

HTP 1°-2° RANGE / EM-P 1°-2° RANGE (ATEX VERSION)



PUMP TYPE	FLANGES DIMENSIONS - mm -					
	R	S	T	DNs	DNd	
HTP 1° RANGE	65	95	14	15	15	DN15 PN25
HTP 2° RANGE	75	105	14	20	20	DN20 PN25

NOTE: DIRECTION OF ROTATION IS COUNTER CLOCKWISE AS SEEN WHEN FACING THE MOTOR.
PUMPS AVAILABLE THREADED OR FLANGED.

* Different according to the motor supplier

** OPTIONAL UPON REQUEST: BASEPLATE - FLANGES.

PUMP TYPE	MOTOR FLANGE B3 - B5	POT. kW	BASEPLATE DIMENSIONS - mm -					
			R'	S'	T'	U'	V'	Z'
HTP 1° RANGE	G 71	0,37	112	244	280	130	160	48
HTP 2° RANGE	G 80	0,75	120	302	350	157	205	60
	G 90 S	1,5	132					

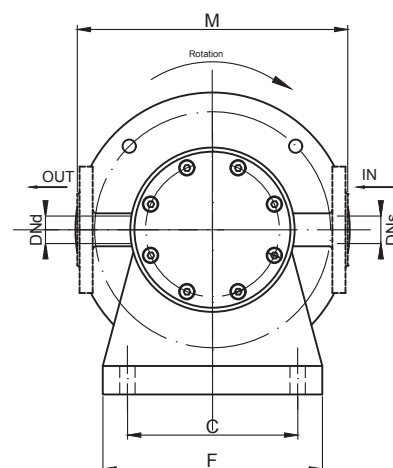
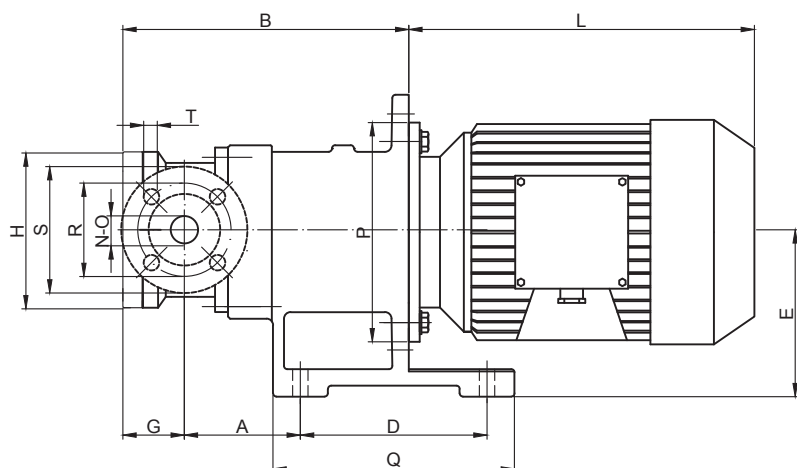
NOTA: ROTAZIONE ANTIORARIA VISTA DAL MOTORE.
POMPE DISPONIBILI CON ATTACCHI FILETTATI O FLANGIATI.

* Diverso a seconda del fornitore

** SU RICHIESTA: PIEDE D'APPOGGIO - FLANGE

PUMP TYPE	MOTOR FLANGE B3 - B5	POT. kW	DIMENSIONS - mm -													
			A	B	C	D	E	F	G	I	* L	M	N	O	P	Q
HTP 1° RANGE	G 71	0,37	127	160	112	90	71	80	33	175	215	182	45	3/8" G.	160	3/8" G.
HTP 2° RANGE	G 80	0,75	166	204	125	100	80	123	38	218	232	194	50	1/2" G.	200	1/2" G.
	G 90 S	1,5	176	214	140	125	90				280		56			

HTP 3° RANGE / EM-P 3° RANGE (ATEX VERSION)



NOTE: DIRECTION OF ROTATION IS COUNTER CLOCKWISE AS SEEN WHEN FACING THE MOTOR.
PUMPS AVAILABLE THREADED OR FLANGED.

* Different according to the motor supplier.
** OPTIONAL UPON REQUEST: Flanges

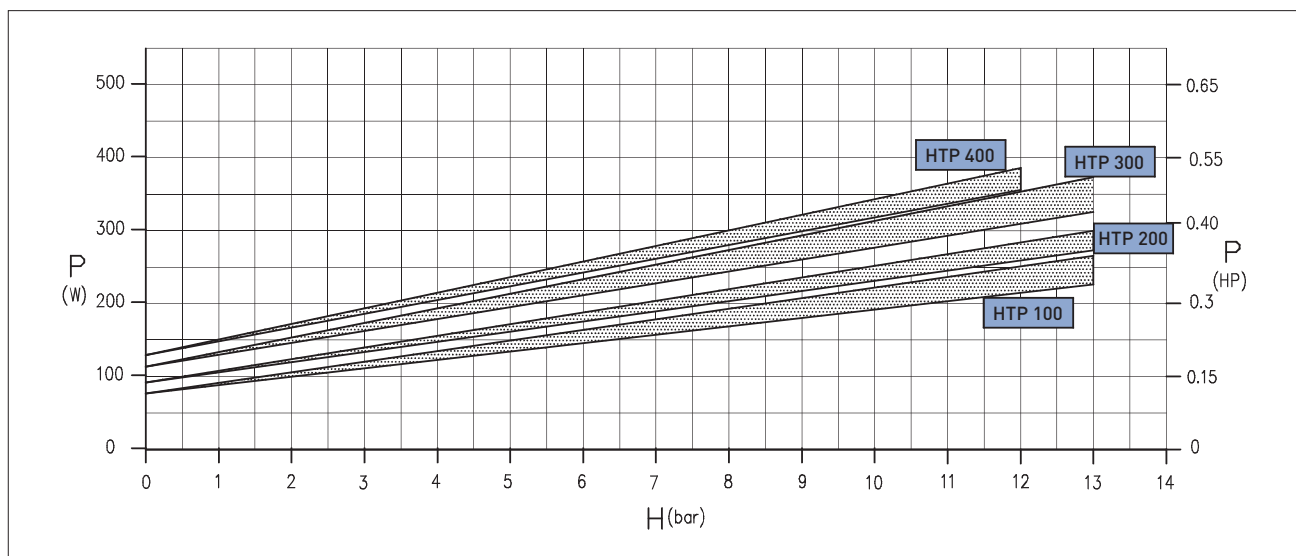
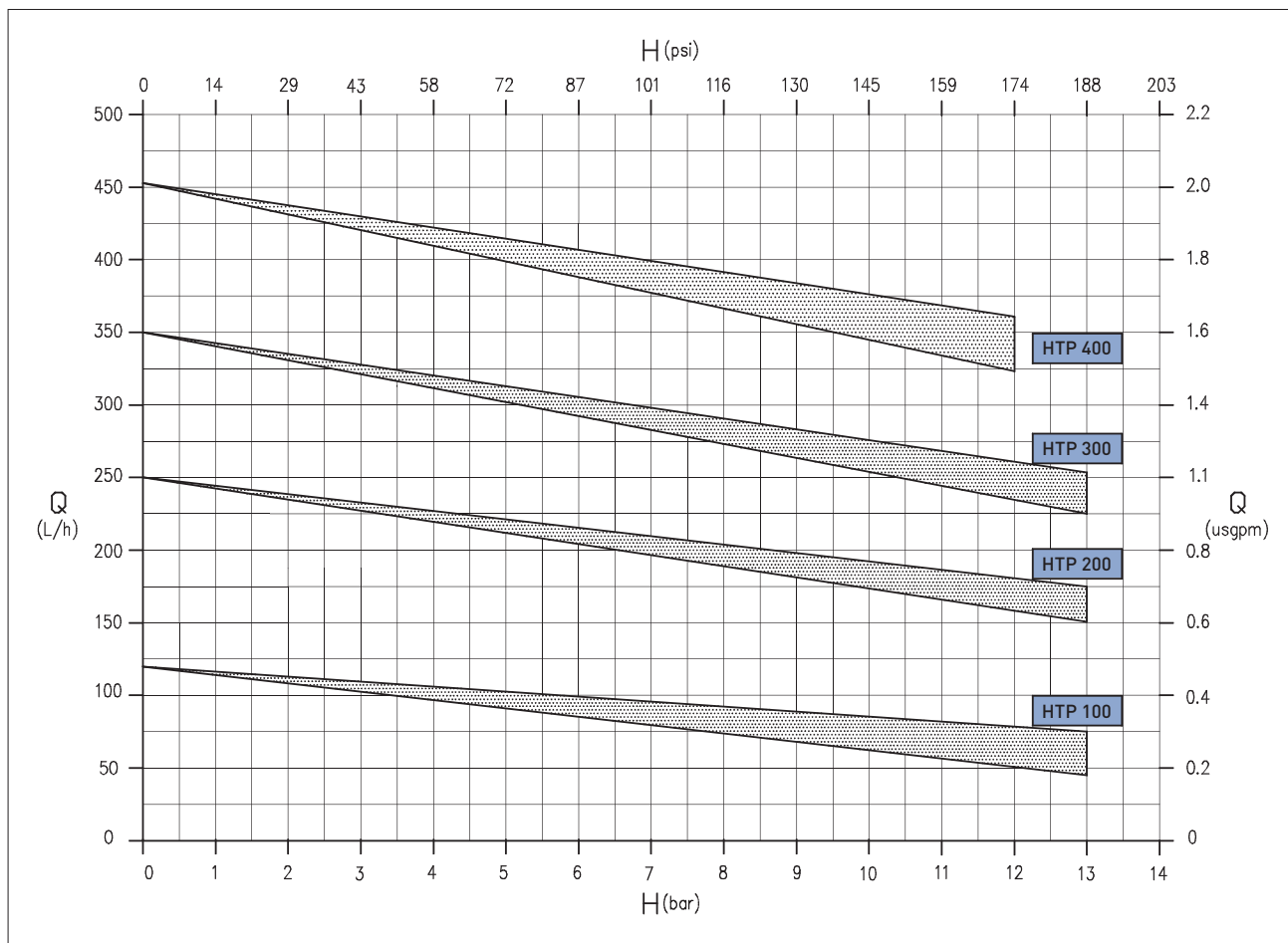
NOTA: ROTAZIONE ANTIORARIA VISTA DAL MOTORE.
POMPE DISPONIBILI CON ATTACCHI FILETTATI O FLANGIATI.

* Diverso a seconda del fornitore.
** SU RICHIESTA: Flange

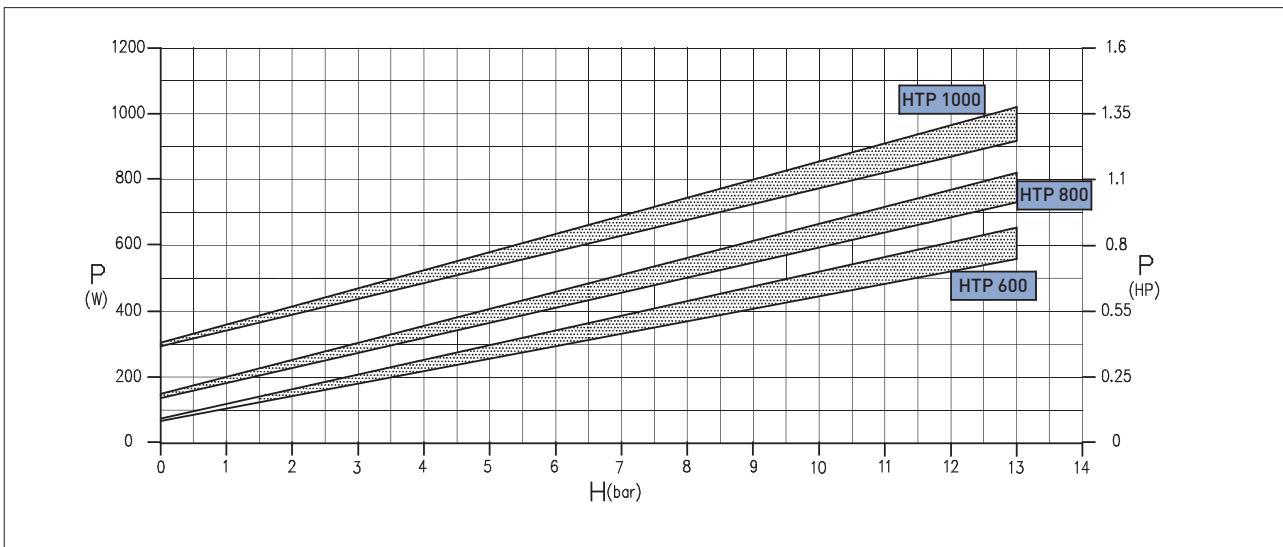
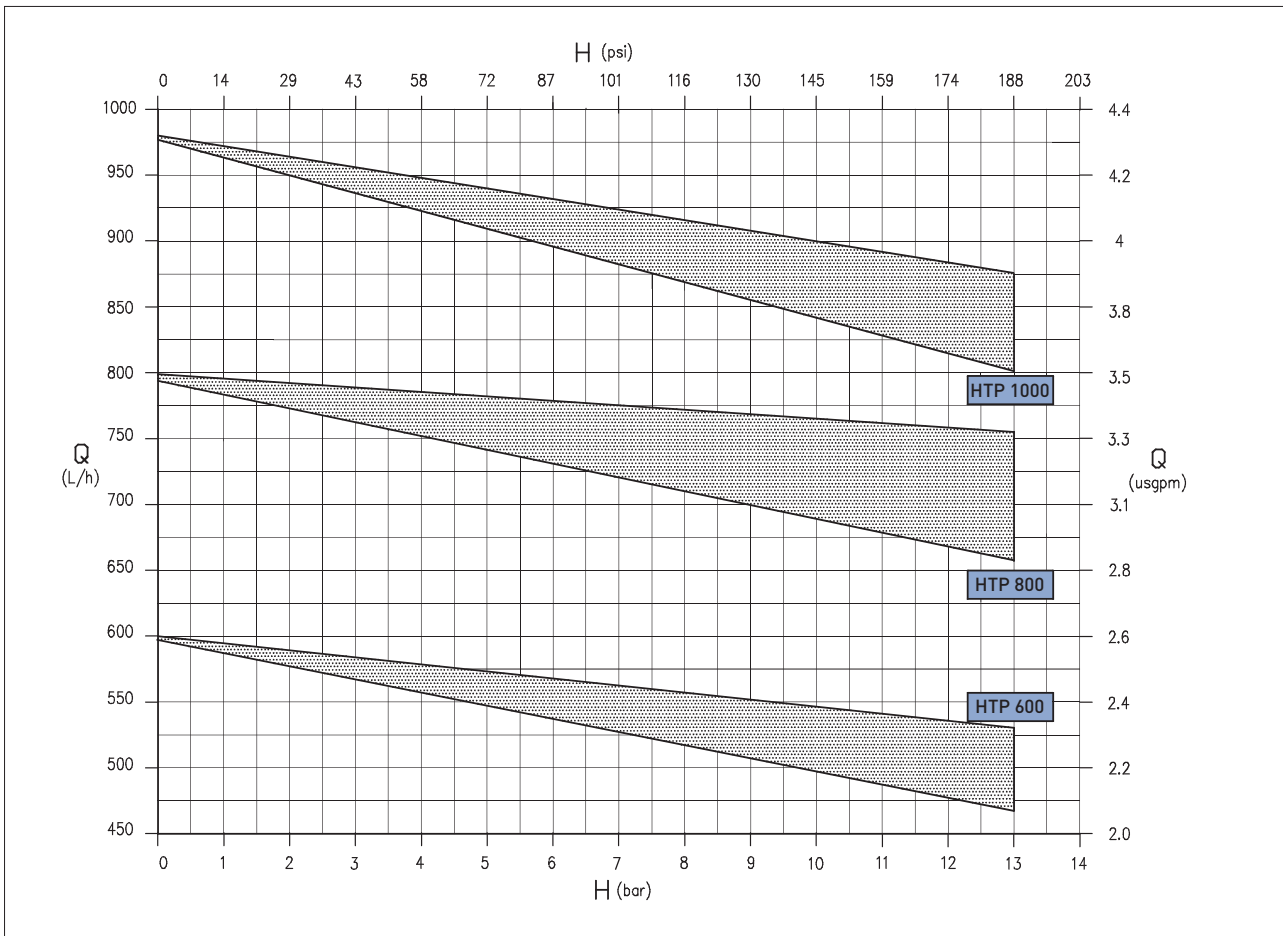
PUMP TYPE	FLANGES DIMENSIONS - mm -					
	R	S	T	DN _s	DN _d	
HTP 3° RANGE	85	115	14	25	25	DN25 PN25

PUMP TYPE	MOTOR B5 4P		DIMENSIONS - mm -													
	SIZE	kW	A	B	C	D	E	F	G	H	*L	M	N	O	P	Q
HTP 3° RANGE	90L	1,5	106	260	155	170	150	200	56	142	280	246	3/4" G.	3/4" G.	200	220
	100L	2.2/3	106	280	155	170	150	200	56	142	316	246	3/4" G.	3/4" G.	250	220
	112M	4	106	280	155	170	150	200	56	142	334	246	3/4" G.	3/4" G.	250	220

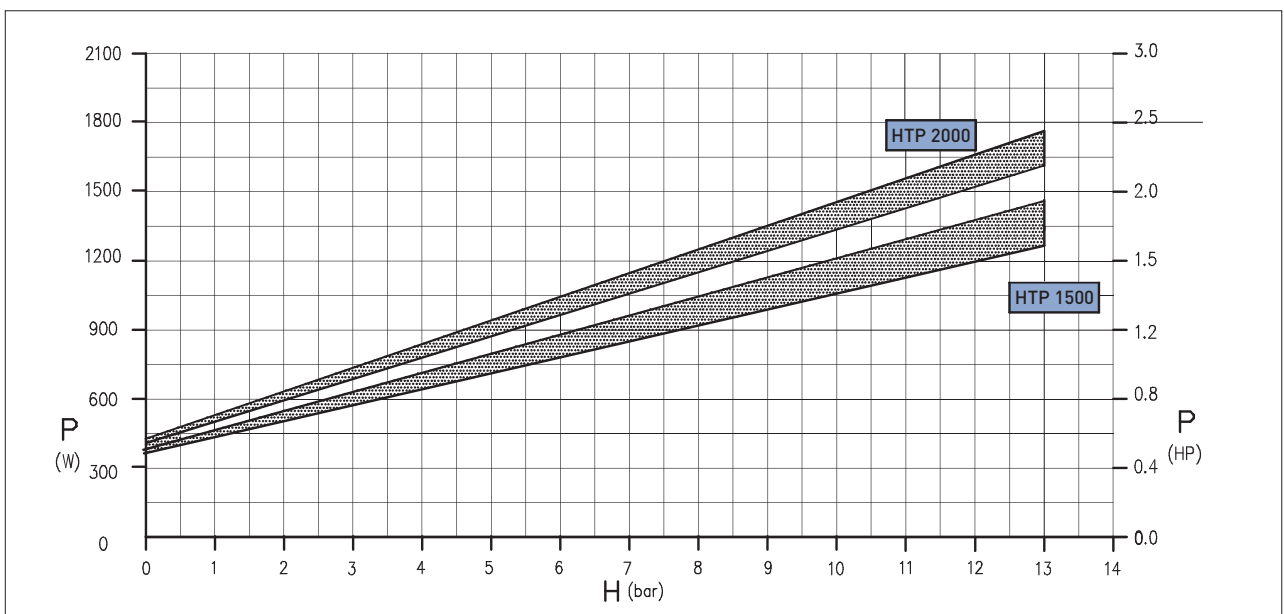
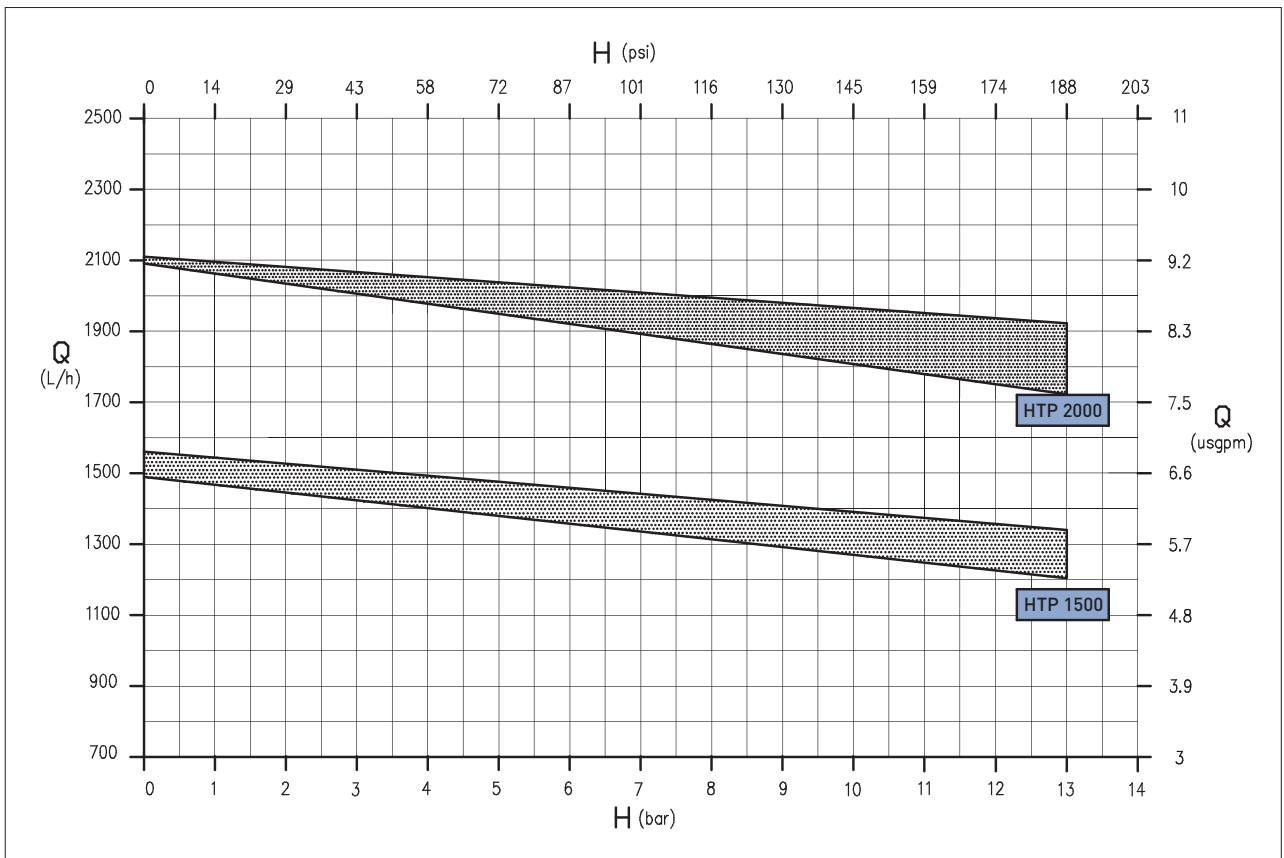
HTP 1° RANGE / EM-P 1° RANGE (ATEX VERSION) 50 HZ - 1450 RPM



**HTP 2° RANGE / EM-P 2° RANGE (ATEX VERSION)
 50 HZ - 1450 RPM**

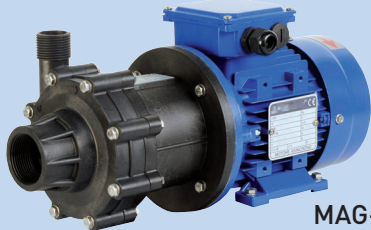


HTP 3° RANGE / EM-P 3° RANGE (ATEX VERSION)
50 HZ - 1450 RPM



RANGE OF PRODUCTION PANORAMA PRODUTTIVO

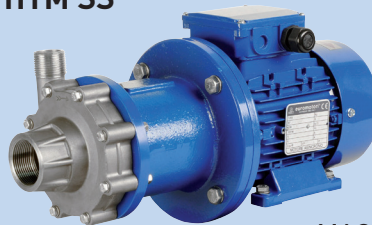
HTM PP/PVDF



MAG-DRIVE CENTRIFUGAL PUMPS

- Q max: 45 m³/h - H max: 33 mlc
- Materials: PP / PVDF

HTM SS



MAG-DRIVE CENTRIFUGAL PUMPS

- Q max: 32 m³/h - H max: 24 mlc
- Materials: AISI 316

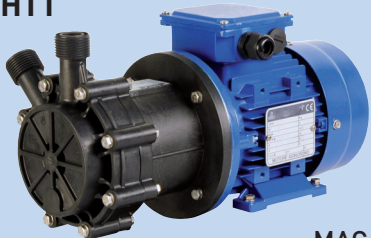
PVA



VERTICAL CENTRIFUGAL CANTILEVER PUMPS

- Q max: 24 m³/h - H max: 26 mlc
- Materials: AISI 316 / TITANIUM

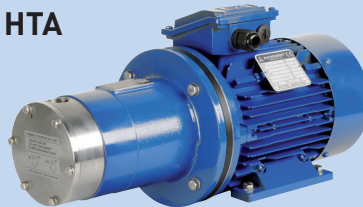
HTT



MAG-DRIVE REGENERATIVE TURBINE PUMPS

- Q max: 9 m³/h - H max: 50 mlc
- Materials: PP / PVDF

HTA



MAG-DRIVE REGENERATIVE TURBINE PUMPS

- Q max: 7 m³/h - H max: 80 mlc
- Materials: AISI 316 / HASTELLOY-C
TITANIUM

HV



VERTICAL CENTRIFUGAL MONOBLOC PUMPS

- Q max: 40 m³/h
- H max: 22 mlc
- Materials: PP / PVDF

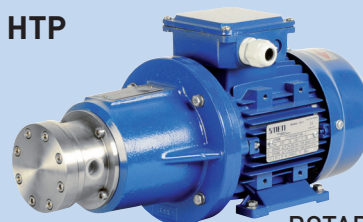
HPP - HPF



MAG-DRIVE VANE PUMPS

- Q max: 1000 l/h - H max: 5 bar
- Materials: PP / PVDF

HTP



ROTARY VANE MAG-DRIVE PUMPS DRY SELF-PRIMING

- Q max: 2100 l/h - H max: 13 bar
- Materials: AISI 316 L / HASTELLOY-C
TITANIUM

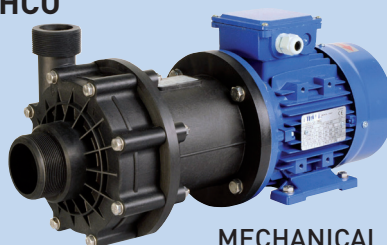
HVL



VERTICAL CENTRIFUGAL PUMPS OPEN IMPELLER

- Q max: 57 m³/h
- H max: 39 mlc
- Materials: PP / PVDF

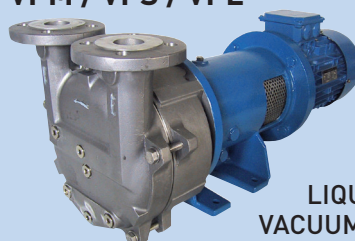
HCO



MECHANICAL SEAL CENTRIFUGAL PUMPS

- Q max: 58 m³/h - H max: 38 mlc
- Materials: PP / PVDF

VPM / VPS / VPL



LIQUID RING VACUUM PUMPS

- Q max: 450 m³/h - H max: 33 mbar
- Materials: AISI 316/316 L SS / ALLOY
HASTELLOY-C / TITANIUM